



# Meeting Planner Guide



DEER VALLEY

Park City, Utah

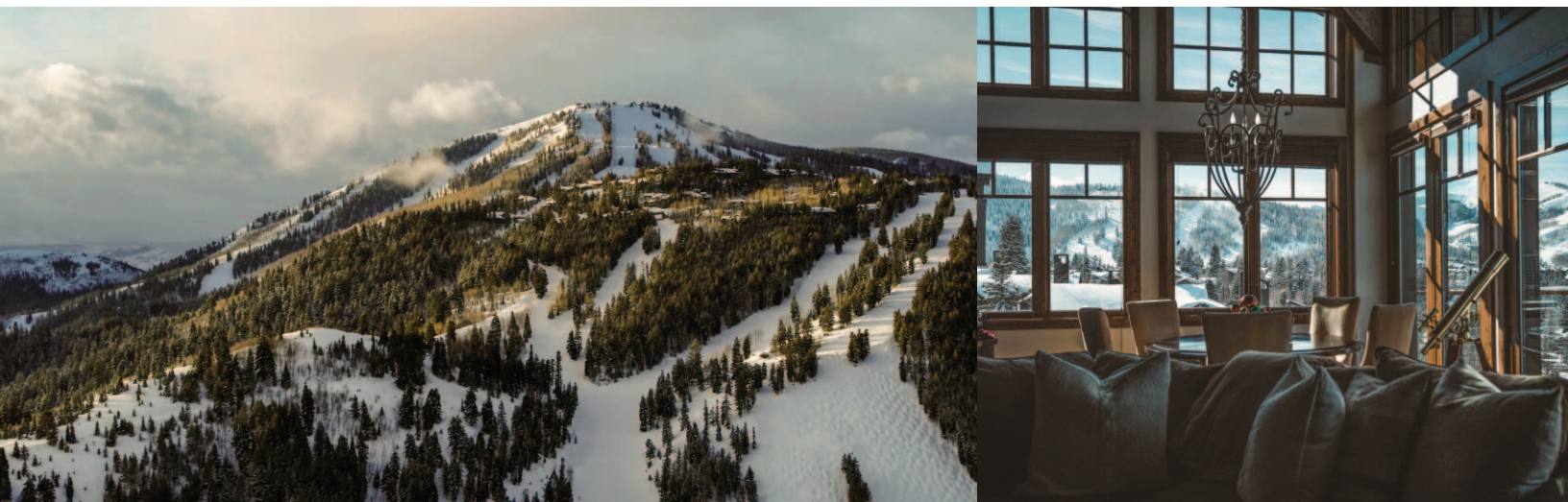
[deervalleymeetings.com](http://deervalleymeetings.com) 435-645-6507





# Deer Valley Resort

One of the most accessible mountain destinations in North America



Deer Valley Resort is nestled in the Wasatch Mountains of Utah, just 38 miles (61 km) east of Salt Lake City International Airport, in the historic mining town of Park City. A wide variety of transportation options are available to whisk you up the mountain via interstate highways. Direct flights from most major cities in the U.S. enable you to leave home in the morning and ski Deer Valley the same afternoon. There are also several non-stop international flights to the Salt Lake City International Airport available.

We understand that the finer details make a big difference, which is why Deer Valley offers first-class amenities such as uniformed ski valets, groomed-to-perfection slopes, award-winning cuisine, on-site child care and convenient lodging. Deer Valley delivers an unmatched experience for your winter vacation.

We're also proud to be investing \$215 million into enhancing our facilities, ensuring every aspect of your experience is truly exceptional. This includes a reimagined banquet menu, featuring both Deer Valley classics and new favorites, thoughtfully curated to elevate your dining experience.

Deer Valley is a ski-only resort with an annual average of 300 inches blanketing over 4,300 skiable acres, nearly 220 runs across eight peaks.

New this season, as part of the Expanded Excellence initiative, Deer Valley is excited to offer access to its expanded terrain for the 25/26 ski season. Skiers will now enjoy 10 new chairlifts, over double the skiable acres, nearly 100 new ski runs, and 500 additional skier parking spots originating from the Deer Valley East Village.



# Expanded Excellence

Rooted in our history and guided by possibility, we’re unveiling Expanded Excellence™, a collection of projects that will evolve and elevate the Deer Valley experience for future generations.

From the adventures that await you in our expanded terrain anchored by Deer Valley East Village, to the bustling energy of a Snow Park base transformation, to the revitalization of existing facilities – join us as we expand on our legacy of excellence.

	ORIGINAL DEER VALLEY	EXPANSION PHASE 2: 25/26	TOTAL BUILD
SKIABLE TERRAIN	2,026 acres	4,300 acres	<b>5,726 acres</b>
RUNS	103	202	<b>238</b>
LIFTS	21	10	<b>37</b>
MOUNTAINS	6	2	<b>10</b>



## Expanded Terrain

Deer Valley’s Expanded Terrain is a long-awaited evolution that will add an additional 3,700 acres of skiable terrain, more than doubling the size of and making Deer Valley one of the largest ski resorts in North America.



## Deer Valley East Village

Deer Valley East Village anchoring Deer Valley’s major terrain expansion will feature a state-of-the-art skier services facility that houses everything from ski school to rentals, retail options, and a diverse array of dining establishments.



## Snow Park Base Transformation

Welcome to your new home base — where world-class amenities meet a one-of-a-kind experience. Explore a reimagined Deer Valley with diverse dining and shopping, elevated lodging, community events, improved mountain access, and more.



## Revitalization of Existing Facilities

Deer Valley’s treasured ski lodges and amenities, reimagined with utmost care. Through meticulous planning, we’re propelling our lodges and dining venues to new heights, infusing them with a thoughtful facelift that promises a lasting impression. Get ready to explore our rejuvenated spaces, where modern flair seamlessly blends with alpine comfort.





## Park City, Utah

Park City, Utah began as a silver mining town, nearly faded into history as a ghost town, and then re-invented itself as a ski town that has grown into a year-round destination hosting global events such as the 2002 Winter Olympic Games and the annual Sundance Film Festival. In just eight years, Park City and Deer Valley Resort will once again step into the global spotlight as an official venue for the 2034 Olympic Winter Games. Deer Valley will proudly host the freestyle skiing events, including moguls and aerials, continuing its tradition of supporting winter sport development on the world stage.

## Historic Park City Main Street

At the heart of Park City is Historic Main Street, home to over 100 unique businesses. Visitors can shop among the independent boutiques and galleries, dine at one-of-a-kind restaurants and enjoy local craft beer and spirits at one of the many bars and saloons. Everything is within a short walk or you can also enjoy a free ride on the Main Street Trolley.





# Lodges at Deer Valley



Managed by Deer Valley Resort | 2900 Deer Valley Drive East, Park City, Utah 84060

It is the architectural detail that makes the Lodges a uniquely beautiful retreat. Nestled near the base of Deer Valley Resort and located one mile from Park City’s Historic Main Street, this first-class condominium hotel offers 84 hotel rooms, 56 one-bedroom suites, 46 two-bedroom suites and 33 three-bedroom suites furnished in a classic mountain style.

Deer Valley’s award-winning food and beverage team provides catering for groups at this conference facility. Over 7,000 square feet of meeting space, divided into seven rooms ranging from 512 to 2,400 square feet, provide a wonderful location for meetings and events.



The Brass Tag restaurant and bar offers a perfect setting for post conference gatherings.

Amenities include 24-hour front desk and on-site check-in, concierge and bell service, complimentary wireless Internet access in each guest room, general store, fitness center, outdoor heated pool, hot tubs and underground parking.

PROPERTY DETAILS

- On-site front desk (24 hrs)
- On-site restaurant and bar, The Brass Tag
- Full service catering for groups
- On-site Conference Services Manager
- General store
- Heated parking garage
- Complimentary wireless high speed Internet in all sleeping and meeting rooms
- Common area hot tubs
- Common area pool
- Bell staff
- Concierge services
- Fitness center/workout room
- On-site package store for beer, wine and liquor
- Located on the free Park City transit route
- Housekeeping services available
- Audio/visual provider with professional support
- Guest computer and printer
- Plush bathrobes
- Full kitchen in one-bedroom or larger condominiums
- Complimentary Deer Valley skier shuttle (winter only)
- On-site lift ticket fulfillment
- Guest ski storage
- Luggage and package shipping and receiving
- Fireplace
- Washer and dryer in one-bedroom or larger condominiums
- Elevator

CONFERENCE HOTEL FACILITIES

THE LODGES AT DEER VALLEY

Sleeping rooms: 266

	DIMENSIONS	APPROX. SQ. FT.	CEILING HEIGHT	CLASSROOM	THEATER	ROUNDS OF 8	RECEPTION	CONFERENCE	U-SHAPE	HOLLOW SQ.
(Third Floor)										
Aspen Boardroom	16' x 32'	512	9.9'	-	-	-	-	20	-	-
Evergreen	60' x 40'	2,400	8.8'/17.5'	130	220	150	253	60	52	64
Evergreen Foyer (pre-function space)		700	8.8'	-	-	-	-	-	-	-
(Second Floor)										
Spruce	42' x 33'	1,386	8.8'	70	140	72	125	32	32	36
Spruce A	21' x 33'	693	8.8'	35	70	36	62	15	15	18
Spruce B	21' x 33'	693	8.8'	35	70	36	62	15	15	18
Oak	34' x 34'	1,156	8.8'	50	85	56	90	27	27	30
Oak A	17' x 34'	578	8.8'	25	42	28	45	13	13	15
Oak B	17' x 34'	578	8.8'	25	42	28	45	13	13	15
The Brass Tag Restaurant*	50' x 37'	1,850	8.8'	-	-	72	-	-	-	-
Second Floor Foyer		700	8.8'	-	-	-	-	-	-	-
(Outside)										
Main Patio	50' x 60'	3,000	-	-	250	140	220	-	-	-
North Patio	50' x 27'	1,350	-	-	80	100	110	-	-	-
Spruce Firepit Patio	30' x 30'	900	-	-	60	65	80	-	-	-
Upper Patio	60' x 30'	1,800	-	-	120	120	130	-	-	-

\*Existing restaurant set





# Silver Baron Lodge

Managed by Deer Valley Resort | 2880 Deer Valley Drive East, Park City, Utah 84060

Rustic meets refined in this elegant lodge appointed in décor reminiscent of the area’s historic mining past. Conveniently located a short shuttle ride from Deer Valley Resort’s base lodge and slopes, and only one mile from Park City’s Historic Main Street, the Silver Baron Lodge is comprised of 52 hotel rooms, 35 one-bedroom, 42 two-bedroom, 17 three-bedroom and three four-bedroom condominiums. Amenities include an outdoor pool, hot tub and underground parking.

Silver Baron Lodge features nearly 3,500 square feet of meeting space. With catering provided by Deer Valley’s award-winning food and beverage team, complete audio/visual equipment, complimentary wireless Internet access and services including an on-site Conference Services Manager, your event will be smooth and memorable.

### PROPERTY DETAILS

- Full service catering for groups
- On-site Conference Services Manager
- General store located in Lodges at Deer Valley
- Complimentary wireless high speed Internet in sleeping and meeting rooms
- Common area pool with slide
- On-site spa services
- Common area hot tub
- Common area fire pit and grill
- Heated parking garage
- Audio/visual provider with professional support
- Private hot tubs in one-bedroom or larger condominiums
- Complimentary yoga (winter)
- Concierge services
- Housekeeping services available
- Fitness center
- Located on the free Park City transit route
- Full kitchen in one-bedroom or larger condominiums
- Gas fireplaces
- Washer and dryer in one-bedroom or larger condominiums
- Plush bathrobes
- Luggage and package shipping and receiving
- Guest ski storage
- Elevator

### CONFERENCE HOTEL FACILITIES

#### SILVER BARON LODGE

Sleeping rooms: 159

	DIMENSIONS	APPROX. SQ. FT.	CEILING HEIGHT	CLASSROOM	THEATER	ROUNDS OF 8	RECEPTION	CONFERENCE	U-SHAPE	HOLLOW SQ.
(First Floor)										
Silver Baron	(L-Shape)	2,912	9'	130	270	160	250	80	62	56
Ponderosa	63' x 29'	1,827	9'	80	170	90	150	40	50	48
El Dorado	35' x 31'	1,085	9'	40	100	60	90	40	40	36
Silver Baron Foyer (pre-function space)	20' x 34'	680	9'	-	-	-	40	-	-	-
Silver Queen Lobby	22' x 30'	660	9'	-	-	-	50	-	-	-
(Second Floor)										
Miners Union Hall *existing restaurant set	31' x 18'	558	8'	24*	-	-	-	-	-	-
(Outside)										
El Dorado Patio	13' x 60'	780	-	-	-	40	50	-	-	-
Main Patio	23' x 50'	1,150	-	-	-	60	80	-	-	-





# Silver Lake Area Lodging



## THE GRAND LODGE

The Grand Lodge brings new meaning to luxury with spacious three- to six-bedroom residences featuring hand-hewn beams, custom cabinets, granite countertops and Sub-Zero appliances along with exquisite furnishings. The two common area hot tubs, ski locker room, complimentary, year-round shuttle service within Park City, fitness center, guest lounge and on-site concierge provide an environment where family and friends connect.

### Property Amenities

- Concierge services
- Daily housekeeping service
- Free parking
- Free WiFi
- Ski-in/ski-out access
- Continental breakfast
- Coffee/hot cocoa
- Fitness center
- Guest ski storage
- Hot tub



# Snow Park Area Lodging



## BLACK DIAMOND LODGE

This luxury ski-in/ski-out condominium lodge in the Snow Park area, situated slope-side next to Deer Valley Resort's Snow Park Lodge and Wide West ski run, offers one- to four-bedroom condominiums with a warm and inviting mountain ambiance.

### Property Amenities

- Continental breakfast *(winter only)*
- Ski-in/ski-out
- On-site concierge services
- Elevator
- On-site front desk
- On-site guest ski storage
- Fireplaces
- Fully appointed kitchens
- Steam room and private hot tubs
- Daily housekeeping service
- Fitness center
- Game room
- Après-ski *(winter only)*
- Complimentary in-town/resort transportation
- Complimentary heated parking garage
- Complimentary wireless high-speed Internet
- Indoor meeting space total 2,326 sq.ft.
- Outdoor meeting space total 2,006 sq.ft.
- Largest meeting space total 1,116 sq.ft. *(winter restrictions may apply)*



## TRAIL'S END LODGE

The standard for luxury and service, Trail's End Lodge in the Snow Park area is a first-class, ski-in/ski-out condominium lodge with newly renovated and upgraded common spaces, personalized service, and a dedicated staff. Located on Success ski run and within walking distance to Deer Valley Resort's Snow Park Lodge, Trail's End Lodge offers one- to four-bedroom residences.

### Property Amenities

- Ski-in/ski-out
- Outdoor heated pool
- On-site front desk
- Massage rooms
- On-site concierge services
- Complimentary parking garage
- Complimentary hot breakfast *(winter only)*
- Fitness center and steam room
- On-site guest ski storage
- Daily housekeeping service
- On-site ski valet service
- Après-ski *(winter only)*
- Complimentary in-town/resort transportation
- Indoor meeting space total 1,379 sq.ft.
- Outdoor meeting space total 2,546 sq.ft.
- Largest meeting space total 1,379 sq.ft. *(winter restrictions may apply)*







Snow Park Lodge

2250 Deer Valley Drive South, Park City, UT 84060

At an elevation of 7,200 feet, the elegantly rustic Snow Park Lodge lies at the base of Deer Valley Resort and offers seven meeting and banquet rooms, totaling 15,000 square feet and ranging in size from 800 to 3,600 square feet, plus two expansive decks. In the summer, Snow Park Lodge is complemented by the Snow Park Outdoor Amphitheater featuring concerts by world-renowned artists, which is also available for private events.

CONFERENCE DAY LODGE SNOW PARK LODGE	DIMENSIONS	APPROX. SQ. FT.	CEILING HEIGHT	CLASSROOM	THEATER	RECEPTION	CONFERENCE	U-SHAPE	HOLLOW SQ.
(First Floor)									
2002 Room	50' x 40'	1,550	10'	60	80	130	28	25	28
Restaurant	60' x 60'	3,600	33.5'/10'	60	100	220	36	30	34
(Second Floor)									
EBS Lounge*	40' x 50'	2,000	9'	-	-	75	-	-	-
Clock Room	70' x 50'	3,500	22.5'/11'	120	220	220	32	56	32
Bald Eagle	40' x 40'	1,600	9'	70	110	130	20	30	20
Overlook	40' x 20'	800	22.5'	21	36	70	14	13	14
(Outside)									
Snow Park Plaza	-	18,700	-	-	-	600	-	-	-
Lower Patio	26' x 90'	2,000	-	-	110	130	-	-	-
Upper Patio	38' x 75'	3,000	-	-	140	175	-	-	-

\* Existing restaurant set

Empire Canyon Lodge

9200 Marsac Avenue, Park City, UT 84060

Located at the base of the spectacular Daly Chutes, at an elevation of 8,300 feet, lies the Empire Canyon Lodge. Although less than two miles from Silver Lake Village, Empire Canyon Lodge features a remote, dramatic mountain setting with breathtaking views and is an outstanding off-site choice for dinners, banquets, barbecues, weddings and outdoor functions. Five distinctive rooms totaling over 7,000 square feet offer slate and granite fixtures, smooth cedar walls and vaulted ceilings. Empire Canyon Lodge is home to winter season’s Fireside Dining, a unique European Alps dining experience featuring four courses served from stone fireplaces. Horse-drawn sleigh rides are available for hire as well.

CONFERENCE DAY LODGE EMPIRE CANYON LODGE	DIMENSIONS	APPROX. SQ. FT.	CEILING HEIGHT	CLASSROOM	THEATER	ROUNDS OF 8	RECEPTION	CONFERENCE	U-SHAPE	HOLLOW SQ.
(First Floor)										
Empire Room	53' x 40'	2,000		100	180	126	200	48	42	48
Empire West	40' x 27'	900		52	102	70	120	34	28	34
Ontario	40' x 30'	950		44	80	70	120	28	24	28
Ontario North	30' x 20'	600		30	50	40	75	28	24	28
(Second Floor)										
Daly	80' x 40'	3,200		140	200	160	300	52	45	52
(Outside)										
Empire Deck	153'x 19'	2,500	-	-	280	208	250	-	-	-





Silver Lake Lodge

# Silver Lake Lodge

7600 Royal Street, Park City, UT 84060

Located mid-mountain in the shadow of Bald Mountain, you'll find our secluded Silver Lake Village and its focal point, the Silver Lake Lodge. At an elevation of 8,100 feet, this lodge features spectacular views along with ten beautifully appointed meeting and banquet rooms, totaling 15,000 square feet and ranging in size from 440 to 3,500 square feet. Silver Lake Lodge is home to the Sticky Wicket as well as the Royal Street Café which features scenic mountain dining in the summer and winter months, with outdoor deck seating.

CONFERENCE DAY LODGE SILVER LAKE LODGE	DIMENSIONS	APPROX. SQ. FT.	CEILING HEIGHT	CLASSROOM	THEATER	ROUNDS OF 8	RECEPTION	CONFERENCE	U-SHAPE	HOLLOW SQ.
(First Floor)										
Mariposa (level one)	18' x 32'	575		20	40	80	100	-	-	-
Mariposa (level two)	-	539								
Caribou	32' x 28'	900		40	65	40	75	30	30	30
Stag	26' x 19'	490		20	35	40	45	24	20	24
Silver Lake Restaurant (pre-function space)	34' x 21'	715		-	-	-	75	-	-	-
Elk	39' x 37'	1,440	19'/16'/9'	60	100	80	120	30	30	36
Bald Mountain	46' x 80'	3,520	32'/17'/9'	180	250	240	270	50	45	50
Royal Street Café* (level one)	26' x 30'	780		-	-	115	90	-	-	-
Royal Street Café* (level two)	20' x 22'	440								
(Second Floor)										
Cedar	27' x 22'	600		30	60	48	50	28	28	28
Great Hall (L-shaped)	130' x 19'	2,470		160	250	200	250	48	-	48
(Outside)										
West Deck	73' x 60'	4,000	-	-	270	250	300	-	-	-
Cedar Deck	38' x 20'	760	-	-	64	50	50	-	-	-
Great Hall Deck	52' x 20'	1,000	-	-	48	30	40	-	-	-
Royal Street Front Deck	108' x 13'	1,400	-	-	90	100	100	-	-	-
Royal Street Deck	31' x 35'	1,000	-	-	80	90	80	-	-	-

\*Existing restaurant set



Snow Park Lodge



Empire Canyon Lodge





# Deer Valley Dining

## Private Banquets

Deer Valley Resort banquet menus showcase award-winning cuisine paired with exceptional service. Our offerings blend time-honored classics with inspired new creations, ensuring every guest finds something to enjoy. Whether savoring signature favorites or discovering fresh additions, our culinary team is dedicated to creating a memorable dining experience. Within our rustic yet elegant Day Lodges and Deer Valley-managed hotels, our expert staff can accommodate groups of 10 to 800 with a full range of customized catering services.

## Deer Valley Café

Deer Valley Café is a charismatic restaurant and gourmet deli located lakeside in the Deer Valley Plaza building and open year-round. Enjoy an indulgent breakfast or lunch in the inviting café or on the outdoor deck, or choose from a convenient selection of grab-and-go items. Wine, beer and specialty cocktails are also available. For more information, please visit [deervalley.com/deervalleycafe](http://deervalley.com/deervalleycafe).

## Royal Street Café

Located mid-mountain at the Silver Lake Lodge, Royal Street Café offers creative American and international cuisine for lunch, with scenic deck dining during the winter and summer seasons. Menu options include creative appetizers, delectable sandwiches, Deer Valley’s Turkey Chili, fresh salads and specialty entrées, and a tempting assortment of desserts including a selection of housemade ice cream from Deer Valley’s Creamery. Royal Street Café has a full bar menu with refreshing seasonal cocktails, fine wines and beers. Children’s menu and takeout available. Table service is provided on the outdoor decks at the restaurant, weather permitting. For more information, please visit [deervalley.com/royalstreet](http://deervalley.com/royalstreet).

## The Brass Tag

The Brass Tag restaurant, located in the Lodges at Deer Valley, offers dinner service during the summer and winter seasons. Enjoy our selection of fine Italian cuisine either at your table or to go, including creative small plates, fresh salads, brick-oven pizza, pasta entrées, lamb, steak and burgers, featuring the best locally sourced ingredients and accompaniments. The unique selection of desserts is not to be missed. A full bar, beer and wine are available, and most dietary needs can be accommodated. For more information, please visit [deervalley.com/thebrasstag](http://deervalley.com/thebrasstag).

## Cast & Cut | Seafood Dining

Dive into a world of fresh flavors, from succulent shrimp, oysters, and mussels to expertly prepared seafood, focused dishes including paella, pasta, stews and more creative culinary expressions. As you navigate an array of interactive chef stations you’ll encounter a symphony of flavors in our gourmet salads, decadent side dishes, and artisanal breads to accompany your selections. And for those seeking a taste beyond the sea, our grill and carving stations feature cuts of meat prepared to perfection. Complementing this culinary journey is an extensive wine and beverage selection, offering the perfect pairing for each seafood delight. For more information, please visit [deervalley.com/castandcut](http://deervalley.com/castandcut).

## Fireside Dining

Fireside Dining offers favorites from the European Alps in the mountains of Deer Valley. The alpine inspired menu features four courses served from our stone fireplaces. Enjoy warm raclette cheese, cured meats, salads, specialty entrées, hearty sides, fire-roasted leg of lamb, freshly baked breads and tantalizing desserts. A full bar is available, as well as specially selected wines and beer. Fireside Dining is available to private groups from September to May, and open to the public on select evenings during the winter ski season. For more information, please visit [deervalley.com/fireside](http://deervalley.com/fireside).

## The Sticky Wicket

Step back in time to the Golden Era of skiing at The Sticky Wicket. This vintage 21+ bar is located mid mountain, upstairs of the Silver Lake Lodge, and will take you back to the early days on the slopes. Serving lunch daily and open late for twilight mountain bike nights, the menu includes delectable appetizers, signature sandwiches, crisp salads and desserts large enough to share. The full service bar serves hand crafted cocktails, as well as a wide selection of wine, ciders, seltzers and beer. For information, please visit [deervalley.com/stickywicket](http://deervalley.com/stickywicket).

## Chute Eleven

Right outside Empire Lodge in Empire Canyon, step into our cozy champagne yurt where ski gear is traded for champagne flutes and caviar. Savor a seasonally curated menu featuring fresh oysters, indulgent caviar, and our signature lobster and caviar grilled cheese, paired with thoughtfully crafted cocktails. Don’t miss the chance to experience the Après-Chute you cannot ski past.

---

*Group buyouts are available upon request. Please contact your Group Sales Manager for further information and availability.*

---



# Mountain Facts

Total Skiable Acreage . . . . .4,300 acres  
Vertical Drop . . . . . 3,040 ft.  
Number of Runs . . . . .204  
Longest Run . . . . .7,725 ft.  
Number of Chairlifts . . . . .31  
High-speed Gondolas . . . . .2  
High-speed Quad Lifts . . . . .20  
Triple Chairs . . . . .5  
Double Chairs . . . . .1  
High-speed Six Pack with Bubble . . . .2

**Attention:**

It is a misdemeanor (Park City Criminal Code section 8-2-9) to ski past rope lines, into closed areas or areas deemed unsafe by Ski Patrol.

If you are involved in a skier collision resulting injury to any person, the law requires you to stop at the scene and render reasonable assistance.

**LEGEND**

Easier

Intermediate

Advanced Intermediate

Advanced

Expert

Children's Adventure Area  
Designed for ages 6-12

First Aid: 435-645-6804

Restrooms

Historic Marker

Official Venue of the 2002 Winter Olympic Games:  
Opening in 2012

Change in difficulty rating comparison:  
Green for Easy - intermediate  
White for Intermediate - advanced

Sunset Cabin

Lifts

Ski Area Boundary

High Speed Lifts

Downloading Lifts

Conveyor Lift

Designated Slow Ski Areas

Expanded Terrain  
Opening in 2012

Food Service

Snacks & Beverages

Ski School

Race Course

Rossignol High Performance Test Center



# Winter Group Offerings

## Ski with a Champion

Deer Valley Resort invites you to ski with one of our participating Olympic snowsport athletes this winter. The athletes are available to ski with individuals, families and groups for exclusive half- and full-day memorable adventures at Deer Valley Resort.

Our Ski with a Champion athletes include Shannon Bahrke, Fuzz Federsen, Kaylin Richardson, Jillian Vogtli, Chris Waddell, Trace Worthington and Ashley Caldwell, each a champion in their respective skiing disciplines. For details about all the participating athletes, please visit [deervalley.com/skiwithachampion](http://deervalley.com/skiwithachampion).

## Ski School

Make the most of your day by taking your skiing to the next level with our renowned ski school and certified instructors. Professionally-trained instructors provide personalized attention, engaging and educating students of all ages and abilities while creating meaningful experiences and long-term relationships. Other guest services include on-site ski rental, specialty ski clinics and state-licensed, on-site child care.

## Deer Valley First Tracks

Experience the exhilarating sensation of skiing freshly groomed corduroy or cruising through untouched powder on Bald Mountain. With our First Tracks program, you can make this dream a reality. You'll have exclusive access to the mountain, indulging in early lift rides and guided skiing from 8 to 9 a.m. This unparalleled experience is the epitome of luxury skiing, allowing you to embrace the tranquility of the slopes privately before they're awakened by the rest of the day's skiers.

*\$15,000 for a group up to 20 skiers, schedule at least 10 days in advance. Prices do not include 9.55% sales tax and are subject to change without notice.*

## Group Lift Tickets

Group lift ticket rates are 12% off the published rates at [deervalley.com/tickets](http://deervalley.com/tickets). A minimum purchase of 25 adults lift tickets per day is required to qualify for group rates. Individual tickets rates will apply if the daily order is less than 25 adult tickets. Reservations are required at least seven days in advance.

*Prices do not include 9.55% sales tax and are subject to change without notice and blackout dates apply.*

## Group Races

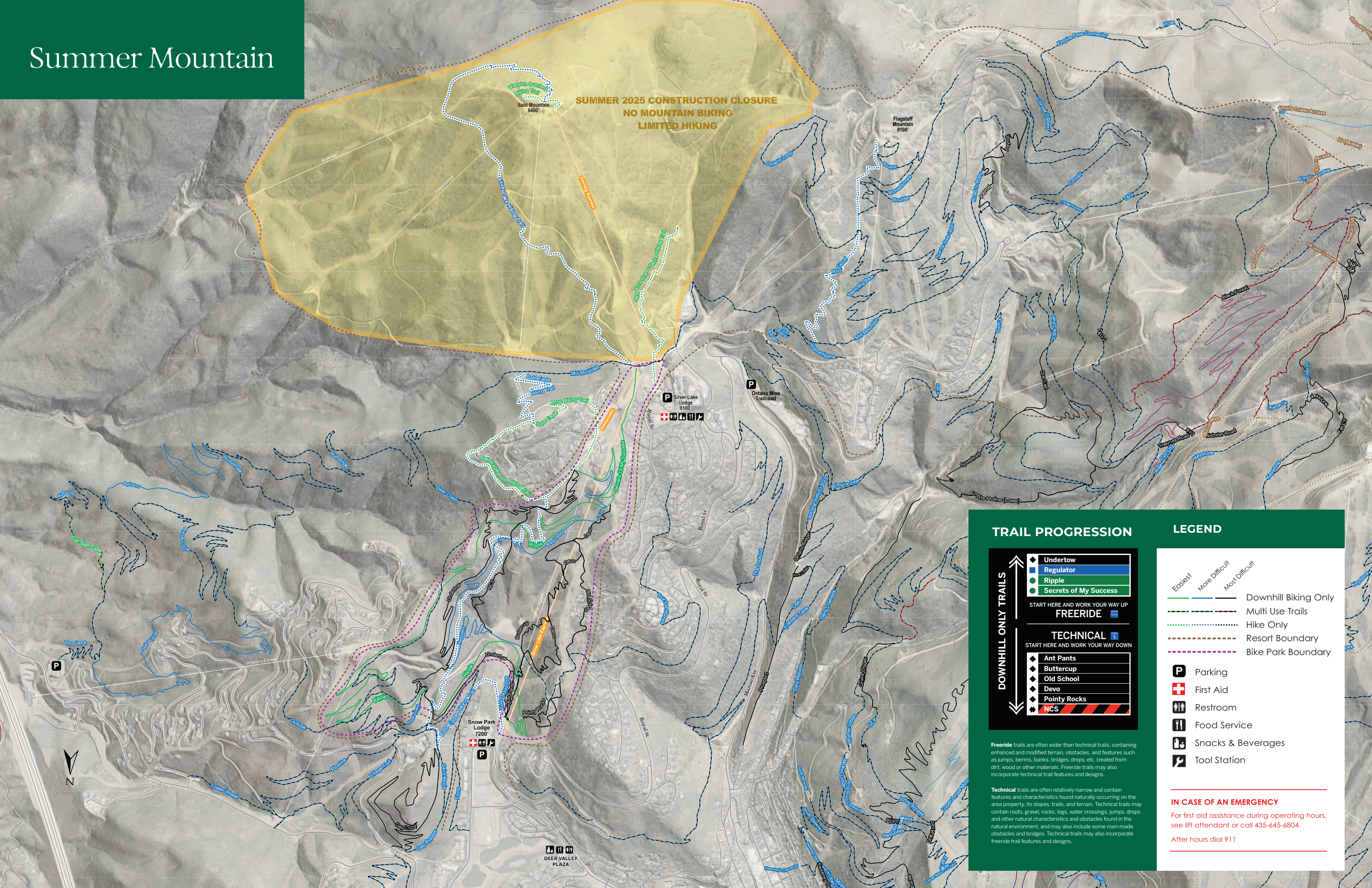
Premium Group/Corporate Race Package \$1,650. This package includes the exclusive use of dual giant slalom course for up to 50 racers, lycra Deer Valley racer bibs (if requested). Additional racers may be added to the group at \$5 per racer. Other options are available; please ask your Group Sales Manager.

*Prices do not include 9.55% sales tax and are subject to change without notice.*





# Summer Mountain



## TRAIL PROGRESSION

DOWNHILL ONLY TRAILS

◆ Undertow

■ Regulator

● Ripple

● Secrets of My Success

START HERE AND WORK YOUR WAY UP

FREERIDE

▲

TECHNICAL

START HERE AND WORK YOUR WAY DOWN

◆ Ant Pants

◆ Buttercup

◆ Old School

◆ Devo

◆ Pointy Rocks

■ NCS

Freeride trails are often wider than technical trails, containing enhanced and modified terrain, obstacles, and features such as jumps, berms, banks, bridges, drops, etc. created from dirt, wood or other materials. Freeride trails may also incorporate technical trail features and designs.

Technical trails are often relatively narrow and contain features and characteristics found naturally occurring on the area property, its slopes, trails, and terrain. Technical trails may contain roots, gravel, rocks, logs, water crossings, jumps, drops and other natural characteristics and obstacles found in the natural environment, and may also include some man-made obstacles and bridges. Technical trails may also incorporate freeride trail features and designs.

## LEGEND

- Easiest

More Difficult

Most Difficult
- —

—

—

—
- Downhill Biking Only

Multi Use Trails

Hike Only

Resort Boundary

Bike Park Boundary

- P

+

♿

🍴

🍹

🛠
- Parking

First Aid

Restroom

Food Service

Snacks & Beverages

Tool Station

**IN CASE OF AN EMERGENCY**

For first aid assistance during operating hours, see lift attendant or call 435-645-6804.

After hours dial 911





# Summer Group Offerings



## Mountain Biking

Dive into the thrill of mountain biking at our resort with bike rentals and expert lessons available. Explore over 60 miles of diverse trails catering to all skill levels, from scenic cross-country routes to adrenaline-pumping downhill tracks. Whether you're a seasoned rider or a beginner, our comprehensive offerings ensure an unforgettable experience amidst breathtaking landscapes.



## Scenic Chairlift Rides

Enjoy a leisurely chairlift ride up Silver Lake Express from the base and then board Sterling Express at mid-mountain to access Bald Mountain. At the top, stretch your legs and explore one of the many hiking trails that wander through Deer Valley. Or simply enjoy the fresh, alpine air at the top before re-boarding the chairlift for your ride back down.



## Hiking

Ride up the Silver Lake Express chairlift from the base and explore miles of hiking-only trails from our mid-mountain Silver Lake Village area or hop on the Sterling Express chairlift at mid-mountain to access the top of Bald Mountain. With even more hiking-only trails available from the top, everyone will find their perfect path. Those hiking up the mountain can enjoy a complimentary chairlift ride down. Please be aware that good hiking shoes are recommended.



## Golf

Golf enthusiasts will appreciate our proximity to several exceptional courses. The Park City Municipal Golf Course is conveniently located just minutes away, offering a scenic and challenging round. Additionally, a variety of golf courses are all within a 30-minute drive, ensuring plenty of options for every level of golfer.





# DEER VALLEY



## DEER VALLEY GROUP SALES

435-645-6507  
800-424-3337

[sales@deervalley.com](mailto:sales@deervalley.com)  
[deervalleymeetings.com](http://deervalleymeetings.com)

P.O. Box 1525  
Park City, UT 84060