



# DEER VALLEY

EXPANDED EXCELLENCE







# RESORT STATS

## MOUNTAIN INFORMATION OVERVIEW

- Base elevation: 1990 meters / 6,530 feet  
*(Deer Valley East Village)*
- Top elevation: 2,917 meters / 9,570 feet
- Vertical drop: 3,040 meters / 3,040 feet
- Skiable area: 1,740 hectares / 4,300 acres
- Glade skiing: 376 hectares / 930 acres
- Number of runs: 202
- Longest run: 7,725 meters / 4.8 miles (Green Monster)
- Number of lifts: 31
- Conveyor/surface lifts: 8  
*(1 Silver Lake, 4 Wide West, 3 at Deer Valley East Village)*
- Uphill lift capacity: 85,360 people per hour
- Vertical transport feet: 71,221  
*(Number of people lifted 1000 vertical feet per hour)*
- Snowmaking coverage: 886 acres of snowmaking
- Distance from lowest elevation to highest: 5 miles  
*(Deer Valley East Village to Empire)*

## LIFTS

- 1 high-speed four-passenger gondola
- 1 high-speed ten-passenger gondola  
*(New East Village Express)*
- 20 high-speed quad lifts
- 5 triple chairs
- 1 double chair
- 2 high-speed 6 pack w/bubble
- 1 fixed grip quad with loading carpet

## RUNS/BOWLS

- 31% Beginner - 62 Green
- 45% Intermediate - 91 Blue/Double Blue
- 24% Expert - 49 Black/Double Black
- Bowls - 7



Deer Valley Resort is nestled in the Wasatch Mountains of Utah, just 38 miles (61 km) east of Salt Lake City International Airport, in the historic mining town of Park City. A wide variety of transportation options are available to whisk you up the mountain via interstate highways. Direct flights from most major cities in the U.S. enable you to leave home in the morning and ski Deer Valley the same afternoon. There are also several non-stop international flights to the Salt Lake City International Airport available.

We understand that the finer details make a big difference, which is why Deer Valley offers a ski-only experience with first-class amenities such as uniformed ski valets, groomed-to-perfection slopes, award-winning cuisine, on-site child care and convenient lodging. Deer Valley® delivers an unmatched experience for your winter vacation.

Deer Valley lift tickets are available to pre-purchase online in increments of one to seven days. The resort is also a member of the Ikon Pass family of resorts. We invite you to enjoy The Greatest Snow On Earth® with an annual average of 300 inches blanketing Deer Valley's nine mountains – Little Baldy Peak, Bald Eagle, Bald, Flagstaff, Empire, Lady Morgan, Keetley Point, Big Dutch and Park Peak – offering a thrilling day for skiers of all abilities.





## PARK CITY, UTAH



Park City, Utah began as a silver mining town, nearly faded into history as a ghost town, and then re-invented itself as a ski town that has grown into a year-round destination hosting global events such as the 2002 Winter Olympic Games and the annual Sundance Film Festival. Located only 38 miles from Salt Lake City International Airport, Park City offers days and nights filled with exceptional restaurants and bars, endless recreation and enduring impressions.

### HISTORIC MAIN STREET

At the heart of Park City is Historic Main Street, home to over 200 unique businesses. Visitors can shop among the independent boutiques and galleries, dine at one-of-a-kind restaurants and enjoy local craft beer and spirits at one of the many bars and saloons. Everything is within a short walk or you can also enjoy a free ride on the Main Street Trolley.

### DINING

Park City has many award-winning restaurants, reflecting a variety of culinary styles and influences with many featuring locally sourced and organic ingredients. Nearly 200 options provide an answer to every taste, mood and budget. After an evening of dining, unwind at one of the many bars, clubs and historic saloons for live music and cocktails.

### WINTER ACTIVITIES

Looking for winter fun off the mountain? Pursue new perspectives by touring this winter wonderland on a dog sled, snowmobile, snowshoe hike or hot air balloon ride. If you enjoy being on the mountain and would like something different, try a heli-skiing excursion or cruise down zip lines, the alpine coaster, go tubing, or participate in the Ski Utah Interconnect Tour.

For more information, please visit the Park City Chamber/Convention & Visitors Bureau at [visitparkcity.com](http://visitparkcity.com).



# WHAT MAKES DEER VALLEY DIFFERENT

- 1 Exceptional Guest Service
- 2 Offering a Ski-only Resort Experience
- 3 Limiting Daily Skier Visitation on the Mountain



# THE “DEER VALLEY DIFFERENCE”

Since Deer Valley’s inception in 1981, we’ve been committed to excellence in everything we do. Our staff members are dedicated to service, which is the key to the resort’s current and future success.

*Over the years, we have invested almost \$300M in capital improvements, to grow from:*

- Five (5) chairlifts to thirty-one (31)
- Thirty-five (35) ski runs to two hundred and two (202)
- Two (2) day lodges to three (3), with two (2) more under construction (Park Peak Lodge and Deer Valley East Village Lodge)
- Fifty (50) ski instructors to almost seven hundred (700), making Deer Valley one of the largest ski schools in the country
- Almost four thousand (4,000) staff members, many of whom have been with the company for over twenty (20) years



## SKI WITH A CHAMPION

Deer Valley Resort invites you to ski with one of our participating Olympic snowsport athletes. The athletes are available to ski with individuals, families and groups for exclusive half- and full-day memorable adventures at Deer Valley Resort.

Our Ski with a Champion athletes include Shannon Bahrke, Fuzz Feddersen, Kaylin Richardson, Jillian Vogtli, Chris Waddell, Trace Worthington and Ashley Caldwell, each a champion in their respective skiing disciplines. For details about all the participating athletes and information about reservations, please visit [deervalley.com/skiwithachampion](http://deervalley.com/skiwithachampion).

## SKIER SERVICES

Make the most of your day by taking your skiing to the next level with Deer Valley’s Gold Standard of Instruction. Professionally-trained instructors provide personalized attention, engaging and educating students of all ages and abilities while creating meaningful experiences and long-term relationships.

Other guest services include on-site ski rental, specialty ski clinics and state-licensed, on-site child care.







OPENING 2025-26 SKI SEASON

- 1 EAST VILLAGE GONDOLA
- 2 VULCAN EXPRESS
- 3 REVELATOR EXPRESS
- 4 PINYON EXPRESS
- 5 GALENA EXPRESS
- 6 PIOCHE EXPRESS
- 7 NEPTUNE EXPRESS

EXPANDED TERRAIN

SILVER LAKE

ORIGINAL DEER VALLEY TERRAIN

SNOW PARK

Keetley Point

OPENING 2025-26 SKI SEASON

Opening 26-27 Ski Season

Opened 24-25 Ski Season

Deer Valley East Village - 1,200 day-skier parking spaces for 25-26



DOUBLE THE DEER VALLEY IN 25/26

The next phase of Deer Valley’s Expanded Excellence initiative will be opening during the 25/26 ski season, offering even more access into its expanded terrain. Skiers will now have access to 10 total chairlifts, over 2,000 new skiable acres, nearly 100 new ski runs, 1,200 parking spots originating from the Deer Valley East Village and Deer Valley’s 10-person gondola, linking the Deer Valley East Village to Park Peak

Deer Valley’s East Village Gondola, East Village Express, is expected to open in December 2025, conditions permitting. It will be Deer Valley’s first 10-person gondola, which will connect the Deer Valley East Village to the top of Park Peak in Deer Valley’s existing footprint. Deer Valley will also welcome its second 6-person chairlift with a bubble, Pinyon Express, along with the other new chairlifts Revelator Express, Galena Express Neptune Express and Pioche Express.

For the 25/26 season, Deer Valley East Village will now offer a Deer Valley Skier Services building that includes a rental shop, complimentary ski storage, and ticketing. A complimentary skier shuttle will transport guests from the 1,200 skier parking spaces directly to the amenities and new lifts.



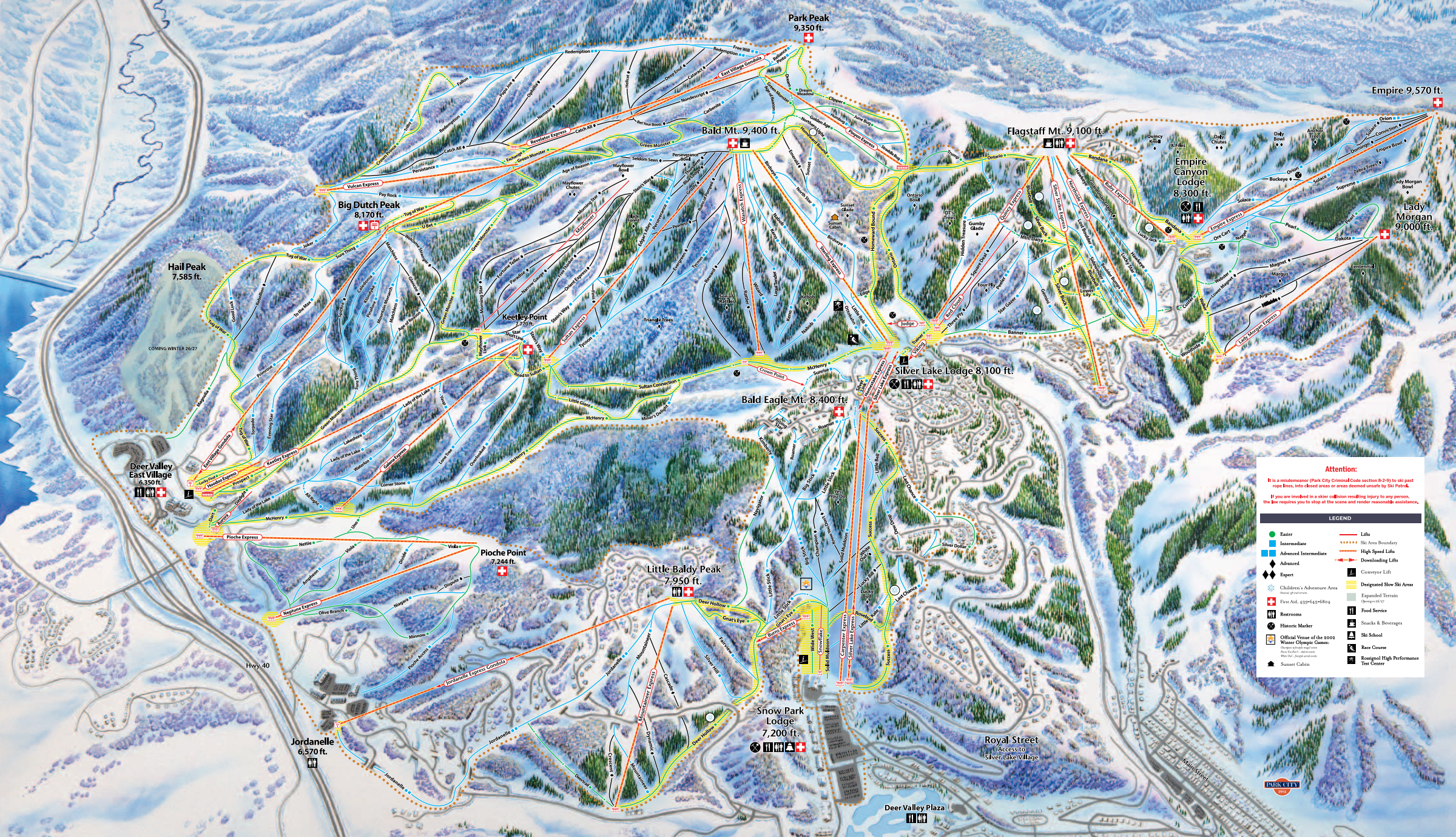


EXPANDED TERRAIN

NEW TERRAIN ADDITION

- The largest increase of skiable terrain in resort history
- Ski access across four new mountain peaks
- 3,120 vertical feet from the highest point of 9,570 feet
- One of the longest ski runs in the country, measuring just short of five miles (Green Monster)
- 7 lifts and 80 runs in 25/26, with 7 new runs and 1 new lift to come in 26/27

Deer Valley's terrain expansion will include a new state-of-the-art, energy-efficient snowmaking system, enhancing Utah's Greatest Snow on Earth®. While maintaining the unique ski-only atmosphere, the resort plans to seamlessly integrate expansion within its existing footprint. The growth will be accompanied by Deer Valley's exceptional guest service, both on and off the mountain, projecting to create 2,000 additional jobs. Along with a limited daily skier capacity that will optimize guest experience, visitors will have the opportunity to enjoy more mountainside eateries showcasing Deer Valley's renowned culinary offerings.



STATISTICS	DEER VALLEY 25/26	DEER VALLEY 26/27
Highest Elevation	9,570 ft	9,570 ft
Lowest Elevation	6,530 ft	6,450 ft
Vertical Drop	3,040 ft	3,120 ft
Number of Runs	202*	209*
Longest Run	4.8 miles	4.8 miles
Snowmaking Coverage	886 acres	925 acres
Skiable Acreage	4,300 acres	4,435 acres
Total Aerial Lifts	31	32
Gondolas	2	2
Detachable Chairlifts	22	23
Fixed Grip Chairlifts	7	7
Conveyor/Surface Lifts	8	8

\* As construction advances, the total number of ski runs may be updated.





## SNOW PARK BASE

- New curated shops and restaurants
- Structured parking with direct access to a pedestrian plaza and lift infrastructure
- State-of-the-art Multi-Modal Transit Center
- Expansive slope-side access

### A LEADING DESTINATION

Whether you're looking for curated food & beverage or elevated retail experiences, the new Snow Park Base Village will be a walkable, pedestrian-friendly destination with new experiences around every corner.

### EXPANSIVE SLOPE-SIDE ACCESS

Featuring a seamless transition from the mountains to the new village, experience skiing like no other with North America's largest ski beach, stunning mountain views, and a new 10-passenger addition to our expansive gondola network that connects Snow Park Village to the Deer Valley East Village.

### YOUR NEW LOCAL SPOT

From our iconic concert series to world-class mountain biking, there's something for everyone in our community to enjoy. Designed with our community in mind, our plans include year-round events, improvements to our amphitheater, and new venues.

### FOSTERING COMMUNITY

With easy access for guests and community residents, the Snow Park Base Village Project will include unique events, fun activities, and spaces for bringing locals together.

## REVITALIZATION OF EXISTING FACILITIES

### ELEVATED ON-MOUNTAIN LODGES

- Thoughtful refreshes of existing ski lodges, including Silver Lake located mid-mountain and Snow Park Lodge located at the base, providing elevated on-mountain dining experiences
- Panoramic views of Park City and the Wasatch Mountains with the renovation and expansion of Cushing's Cabin on Flagstaff Mountain

### MID-MOUNTAIN BITES AND LIBATIONS

- Introduction of a new 21+ bar experience at Silver Lake Lodge
- Featuring a vintage ski ambiance, craft beers, creative cocktails and elevated ski bar nibbles
- Renovation of Royal Street Café
- Featuring an updated menu and the perfect mid-day spot to gather with friends and family before finishing the day on the slopes

### DEER VALLEY DIFFERENCE: GROOMING AND SNOWMAKING

- Perfectly groomed slopes and state-of-the art snowmaking and it continues to be a core pillar
- This winter we will invest millions in maintaining the meticulous slopes we are known for

### SUMMER ADVENTURES

- World-class bike park built by Gravity Logic with trail improvements and new trails being introduced each year
- Reimagined summer concert venue

## DEER VALLEY EAST VILLAGE

### NEW GATEWAY TO ADVENTURE

- Arrive at Deer Valley East Village via an entrance from U.S Route 40, circumnavigating the town of Park City
- 1,200 day skier parking spaces ensure you will be on the slopes faster than ever

### ADVENTURES AND APRÈS

- Largest "ski beach" in North America with stunning mountain views
- Diverse culinary experiences at premier restaurants and bars
- On-site ice-skating rink

### EXCEPTIONAL SKIER SERVICES

- Deer Valley's renowned guest service woven throughout the Deer Valley East Village experience
- Award-winning ski school and children's programs expanded to Deer Valley East Village
- Premium equipment rentals
- Variety of retail shops

### PREMIUM STAYS

- Relaxation and unparalleled convenience to the slopes
- Combination of residential units and hotel rooms across multiple properties
- Range of homes and havens that blend timeless design with modern comfort







# GUEST ACCOMMODATIONS

*Diverse Portfolio of Luxury Lodging Properties*

## 25/26 NEW PROPERTIES

- **Sky Ridge and Amanti Lago** (Deer Valley East Village) – Luxury home rentals debuting in Deer Valley’s newest base area. Private homes are rented as part of our Signature Collection.
- **Founders Place** – Brand-new ski-in/ski-out residences at the base of the Mountaineer Express lift. Founders Place will feature 75 luxury condominium residences, across four buildings with spectacular slopeside views, anchored by a state-of-the-art amenity building.
- **Silver Strike** – Deer Valley is now the HOA and property manager, expanding our presence in Empire Pass.



*Deer Valley Resort Lodging and Reservations (DVRLR), is the only full-service property management company and reservation center owned and operated by Deer Valley Resort.*

Accommodations are available in a wide range of sizes and locations. DVRLR manages over 500 residences across nearly 50 unique properties.

- Over 99,000 guests stayed with us during the 2024/25 winter season
- Over 150 of our Lodging Properties have ski in/ski out access
- Robust concierge amenities including lift ticket packages, transportation, grocery delivery and more
- Full-service group sales team that specializes in corporate groups and special events







# DINING

At Deer Valley Resort, dining is an integral part of a complete vacation experience. From casual, family-friendly cafés and grills, to elegantly rustic restaurants, every Deer Valley dining experience features quality ingredients and creative, fresh preparations with emphasis on locally sourced products.

## SNOW PARK BASE AREA

- Cast & Cut Steak | Seafood – Dinner
- Deer Valley *Etc.* – Grab and Go Breakfast, Lunch
- Deer Valley Café – Breakfast, Lunch, Après-ski
- Snow Park Restaurant - Breakfast, Lunch, Après-ski
- The Brass Tag – Dinner
- Edgar’s - Lunch, Après-ski

## EMPIRE CANYON AREA

- Cushing’s Cabin – Lunch, Snacks
- Empire Canyon Grill – Breakfast, Lunch
- Fireside Dining - Dinner
- Chute Eleven – Lunch, Après-ski (21+)

## SILVER LAKE MID-MOUNTAIN AREA

- Daly Lift – Coffee, Pastries
- Royal Street Café – Lunch
- Silver Lake Restaurant – Breakfast, Lunch
- Sticky Wicket – Lunch, Dinner, Bar (21+)
- Snowshoe Tommy’s – Snacks

## DEER VALLEY EAST VILLAGE

- Deer Valley East Village Lodge (Sprung Structure) – Breakfast, Lunch

## FIRESIDE DINING

Indulge in culinary delights. Savor our seasonally curated menu featuring an exquisite selection of fresh seafood and gourmet offerings, including succulent fresh oysters, indulgent caviar, and our signature lobster and caviar grilled cheese. Elevate your experience. Pair your caviar and oysters with thoughtfully crafted cocktails that’ll warm you up faster than a hot cocoa on a cold day. Then sit back and immerse yourself in a vibrant atmosphere featuring top entertainment from around the globe.

## CAST & CUT | SEAFOOD DINING

Discover the ocean's finest at Cast & Cut | Seafood Dining, where a bounty of sustainably sourced seafood is the anchor to your evening. Dive into a world of fresh flavors, from succulent shrimp, oysters, and mussels to expertly prepared seafood, focused dishes including paella, pasta, stews and more creative culinary expressions. As you navigate an array of interactive chef stations you’ll encounter a symphony of flavors in our gourmet salads, decadent side dishes, and artisanal breads to accompany your selections. And for those seeking a taste beyond the sea, our grill and carving station features cuts of meat prepared to perfection.

## DEER VALLEY CAFÉ

Deer Valley Café is a charismatic gourmet market and restaurant located lakeside in the Deer Valley Plaza building. Join us and enjoy an indulgent breakfast, lunch or après-ski in the inviting café or on the outdoor deck, overlooking the ponds and mountains of Deer Valley or choose from our convenient selection of grab-and-go items. Plus, we invite you to peruse our selection of kitchenware, cookbooks, candles, and gifts that speak to the soul of cooking and celebrating with family and friends.



## ROYAL STREET CAFÉ

Located mid-mountain at the Silver Lake Lodge, Royal Street Café offers creative American and international cuisine with scenic deck dining. Menu options include creative appetizers, delectable sandwiches, Deer Valley’s Turkey Chili, fresh salads and specialty entrées, and a tempting assortment of desserts. Deer Valley Creamery’s refreshing selection of housemade ice cream is also available. Children’s and take-out menus are available as well as fine wine, beer and refreshing seasonal cocktails.

## THE BRASS TAG

The Brass Tag restaurant in the Lodges at Deer Valley offers dinner service during the summer and winter seasons. Enjoy a selection of fine Italian cuisine either at your table or to-go, including pastas, brick-oven pizza and more. A full bar, beer and wine are available.

## CHUTE ELEVEN

Nestled in the heart of Empire Canyon, right outside our iconic Empire Lodge, Chute Eleven presents a world of luxury like never before. Step into our cozy champagne yurt, where ski gear gets traded for champagne flutes and caviar. Indulge in culinary delights. Savor our seasonally curated menu featuring an exquisite selection of fresh seafood and gourmet offerings, including succulent fresh oysters, indulgent caviar, and our signature lobster and caviar grilled cheese. Elevate your experience. Pair your caviar and oysters with thoughtfully crafted cocktails that’ll warm you up faster than a hot cocoa on a cold day. Then sit back and immerse yourself in a vibrant atmosphere featuring top entertainment from around the globe.

## EDGAR’S

Discover Edgar's, Deer Valley's coolest new hangout, where the commitment to sport is highlighted and we provide you with a place to watch your favorite events. Located on the second floor of Snow Park Lodge, Edgar's celebrates the remarkable history of Deer Valley, from hosting the FIS Freestyle World Cup for 27 years to the unforgettable 2002 Winter Olympics. Named in honor of Edgar Stern, the visionary founder of Deer Valley, our bar is a tribute to the legends who have shaped our slopes, including the iconic Stein Eriksen.



## STICKY WICKET

Step back in time to the Golden Era of skiing at The Sticky Wicket. This vintage 21+ bar is located mid-mountain, upstairs in the Silver Lake Lodge, and will take you back to the early days on the slopes. Serving lunch daily and open late for après, the menu includes delectable appetizers, signature sandwiches, crisp salads, and desserts large enough to share.



# SHOPPING/RETAIL

While you are in the Deer Valley® area, be sure to visit our resort-owned and operated retail stores; NextGen DV, DV Essentials, Deer Valley *Signatures* and Shades of Deer Valley, as well as other on-site merchants located in the Snow Park Lodge and Silver Lake Village. The town of Park City is also full of shopping opportunities along Historic Main Street, including Deer Valley *Signatures* at 577 Main Street. You can also visit our online store at [shop.deervalley.com](http://shop.deervalley.com)





# SUMMER AT DEER VALLEY

Open daily from mid-June through Labor Day, and then Friday-Sunday only through September, weather and conditions permitting.



## LIFT-SERVED BIKING AND HIKING

Spread over six mountains and featuring up to 3,000 vertical feet of elevation change, Deer Valley Resort offers nearly 70 miles of mountain bike trails, including four flow trails designed by Gravity Logic. Our fun and thrilling mountain bike trails are accessed via three chairlifts. Silver Lake Express at the base of the resort, Sterling Express located mid-mountain, and Homestake Express also located mid-mountain, provide access to a wide variety of excellent trails. Several of Deer Valley Resort’s mountain bike trails connect with Park City’s extensive 400-mile network of single track.

Gravity Logic delivers Deer Valley’s newest flow/jump trail, Regulator. Mount up for the latest intermediate trail which ties into Ripple, an approachable beginner flow trail introduced last season. With this new terrain, Deer Valley offers more than nine miles of beginner flow trails from the top of Bald Mountain to the Snow Park base area.

## BIKE RENTALS

Deer Valley Resort offers an exceptional line of high-quality, full-suspension Rossignol and Trek bikes for rent.

## MOUNTAIN BIKING SCHOOLS AND CLINICS

Adult and Kids’ clinics, bike tours and private coaching are available and personalized to guests’ abilities from familiarizing bikers with Deer Valley’s extensive trail network to refining the skills and techniques for downhill mountain biking.

The new kids’ Gravity Bike Clinic is a two-day downhill bike camp for intermediate and advanced riders ages 10 – 14, being offered throughout the summer. Bike rentals, lift tickets, and protective equipment will be available for purchase to ensure participants have everything they need for a seamless ride.

## GUIDED HISTORICAL HIKES AND PRIVATE GUIDED HIKES

*Guided Historical Hikes:* Enjoy the beauty of Deer Valley Resort with a guided hike highlighting the area’s mining history. These hikes last three to four hours, cover moderately strenuous terrain and are typically less than six miles long.

*Private Guided Hikes:* Join our expert guides for a private hike to explore local trails, learn about the area’s rich history, and discover native flora.

## CONCERTS IN THE SNOW PARK OUTDOOR AMPHITHEATER

The Snow Park Outdoor Amphitheater is home to two unique concert series, the Deer Valley Concert Series and the Utah Symphony’s Deer Valley® Music Festival. Our venue accommodates up to 5,000 guests and offers hillside viewing from reserved seats as well as a large general admission section. This season’s lineup can be viewed at [deervalley.com/concerts](http://deervalley.com/concerts).

## SUMMER ADVENTURE CAMP

Deer Valley’s Summer Adventure Camp is offered for children ages 2 months to 12 years and is based out of our state-licensed Children’s Center in Snow Park Lodge. From early June to late August, campers will discover a mountain of fun and wonders through adult-supervised and age-appropriate activities like sports, nature studies, scavenger hunts, art, and community projects.

## DEER VALLEY MOUNTAIN BEER FESTIVAL

The Deer Valley Mountain Beer Festival returns to Silver Lake on September 13-14, 2025. This one-of-a-kind beer festival includes scenic chairlift access throughout the resort, dining, live music plus a full slate of activities. Please be aware that the venue can only be accessed by a chairlift ride on Silver Lake Express.

Attendees to Park City’s only beer festival will enjoy the opportunity to sample a wide range of beer flavors and styles, including many full-strength selections. The festival was created to celebrate Utah’s brewing culture and is exclusive to breweries from Utah. Expect to see local producers, such as Offset Bier and Park City Brewing, as well as nationally recognized brewers from the Beehive State, including Squatters and Uinta, who kick-started Utah’s craft brew scene several decades ago.

## SUMMER DINING

At Deer Valley Resort, dining is an integral part of completing your summer experience. From casual, family-friendly cafés and grills to elegantly rustic restaurants, every Deer Valley dining experience features quality ingredients and creative, fresh preparations with an emphasis on locally sourced products.

*Summer restaurants include:*

- Deer Valley Café – Breakfast, Lunch, Take-away Dining at the resort’s Snow Park Base area
- The Brass Tag – Al Fresco Dinner at the Lodges at Deer Valley
- Royal Street Café – Lunch and Take-away Dining at mid-mountain
- Snowshoe Tommy’s – Snacks, Beer, Beverages at the top of Bald Mountain
- Sticky Wicket – 21+ Bar serving Lunch and Dinner at mid-mountain





TRAIL PROGRESSION

DOWNHILL ONLY TRAILS

Undertow

Regulator

Ripple

Secrets of My Success

START HERE AND WORK YOUR WAY UP

Freeride

TECHNICAL

START HERE AND WORK YOUR WAY DOWN

Ant Pants

Buttercup

Old School

Devo

Pointy Rocks

NCS

**Freeride** trails are often wider than technical trails, containing enhanced and modified terrain, obstacles, and features such as jumps, berms, banks, bridges, drops, etc. created from dirt, wood or other materials. Freeride trails may also incorporate technical trail features and designs.

**Technical** trails are often relatively narrow and contain features and characteristics found naturally occurring on the area property, its slopes, trails, and terrain. Technical trails may contain roots, gravel, rocks, logs, water crossings, jumps, drops and other natural characteristics and obstacles found in the natural environment, and may also include some man-made obstacles and bridges. Technical trails may also incorporate freeride trail features and designs.



DEER VALLEY

LEGEND

Easiest

More Difficult

Most Difficult

Downhill Biking Only

Multi Use Trails

Hike Only

Resort Boundary

Bike Park Boundary

P Parking

First Aid

Restroom

Food Service

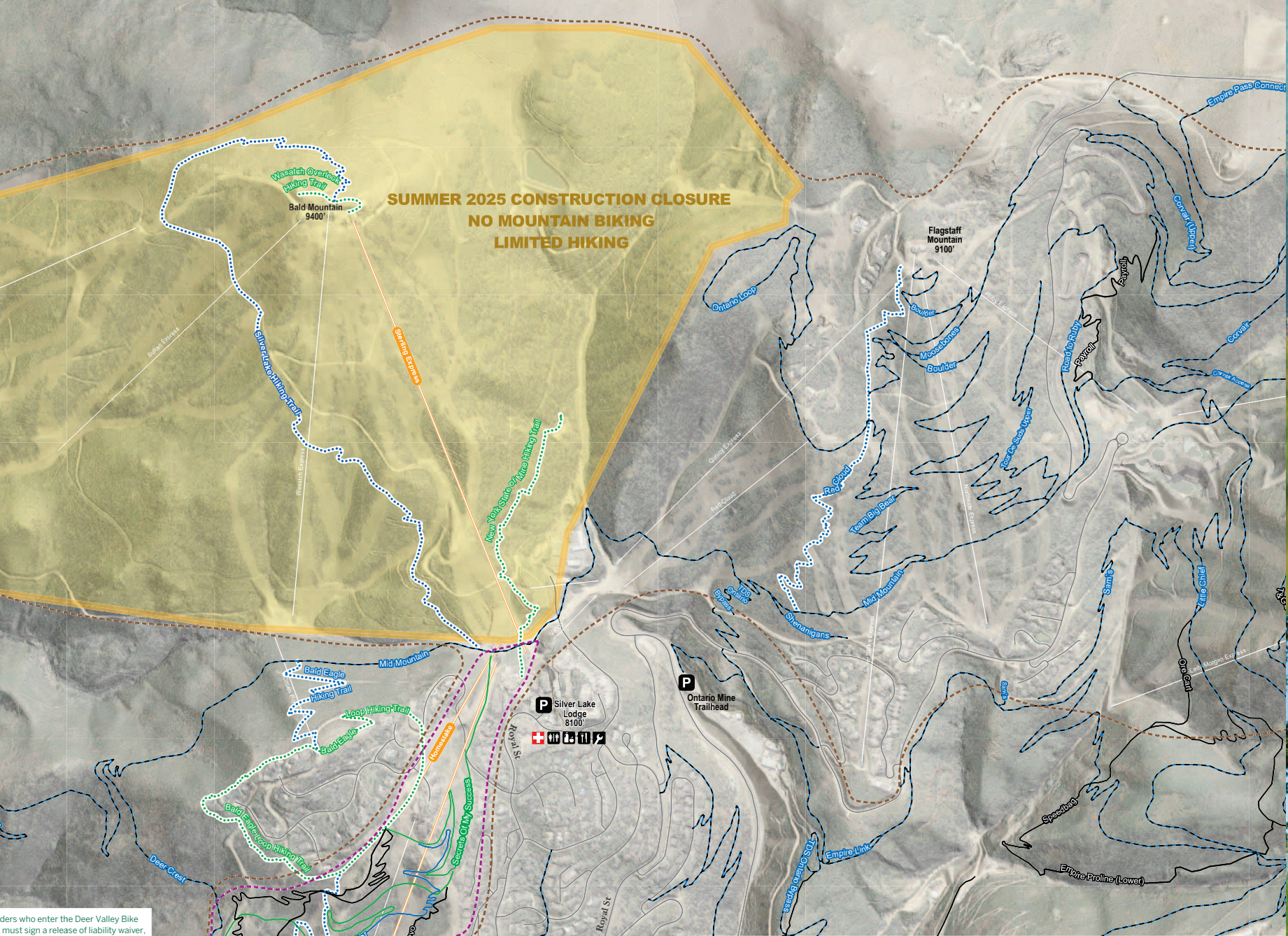
Snacks & Beverages

Tool Station

IN CASE OF AN EMERGENCY

For first aid assistance during operating hours, see lift attendant or call 435-645-6804.

After hours dial 911



All riders who enter the Deer Valley Bike Park must sign a release of liability waiver, have a valid lift ticket or obtain a Bike Park access pass.

Leaving Deer Valley trail system; visit [mountaintrails.org](https://mountaintrails.org)

MOUNTAIN BIKE CODE OF CONDUCT

Mountain Biking is different than road or soft surface trail riding. It is confined to trails where rocks, dirt, loose gravel, stumps, and trees may be encountered at any time. Changing weather conditions, terrain variations, including steepness, natural, and man-made obstacles and features, and other dangers or conditions may be encountered on the mountain and are inherent risks.

Mountain biking or hiking offer a range of challenges and adventures. Trail users can choose gentle scenic routes, flow trails or challenging single track descents. Regardless of what type of terrain you select, remember, there are elements of risk in mountain biking or hiking. Common sense and personal awareness can help to create a great trail experience for everyone. By mountain biking or hiking at Deer Valley Resort, trail users understand and acknowledge that mountain biking or hiking are hazardous sports with many inherent risks and trail users assume all risks of personal injury as well as damage to or loss of property arising from participation in these sports.

All riders who enter the Deer Valley Bike Park must sign a release of liability waiver, have a valid lift ticket or obtain a Bike Park access pass.

- Stay in control. Yield to riders going at different speeds and announce yourself when approaching them
- Know your limits. Ride within your ability. Start small and work your way up
- Protect yourself. Be self-sufficient and aware of changing weather and terrain conditions. Water, tools, protective gear, gloves, sturdy shoes and sunscreen are recommended. Helmets are required for all bikers
- Inspect and maintain your equipment. Know your components and their operation prior to riding
- Inspect the trails and features. When in doubt, walk your bike
- Be lift smart. Prior to using any lift, you must have the knowledge and ability to load, ride and unload safely. If you need help understanding the Code, please ask an employee
- Obey signs and warnings. Obey all trail signs and markings and only ride/hike on designated trails
- Be visible. Don't stop where you obstruct a trail or are not visible to others
- Look and yield to others. Always yield to vehicles, horses, hikers, uphill and slow riders
- Cooperate. Notify the lift operator for first aid assistance or call 435-615-6208. If involved in or witness to an incident, identify yourself to staff

Summer is the ideal time for trail maintenance, including repairs, grooming, clearing debris, reinforcing edges, and ensuring proper drainage—tasks that are difficult during winter due to snow cover. Additionally, the resort also takes this time for terrain expansion, introducing new areas for exploration to enhance the guest experience. While trail closures and heavy equipment may be present, these improvements are necessary for future success. Please stay alert and abide by all trail closures for your safety and the safety of our staff.

For more information please scan the QR code or visit [deervalley.com](https://deervalley.com)







## RESORT OVERVIEW

Deer Valley Resort is nestled in the Wasatch Mountains of Park City, Utah – just 38 miles (61km) east of Salt Lake City International Airport.

*Deer Valley is part of the Alterra Mountain Company portfolio.*

### AWARDS AND ACCOLADES

- #1 Best U.S. Ski Resort - World Ski Awards - 13th year in a row
- #1 Grooming, Lodging, Weekend Getaway - *SKI Magazine* 2026 Resort Guide
- #2 Best Ski Resort in the U.S. - *Condé Nast Traveller* 2025
- Top 10 in Best Ski Resort, Best Ski School, Best Ski Restaurant (The Brass Tag), and Best Après Ski Bar (Chute Eleven) - *USA TODAY* 10 Best Awards 2025

### WORLD-CLASS AMENITIES

- Groomed-to-perfection slopes
- Award-winning cuisine
- Overnight ski valet
- Luxury accommodations that provide in-house guests concierge service and complimentary resort transportation
- Complimentary onsite parking in either private or common area garages



# DEER VALLEY

EXPANDED EXCELLENCE

**Emily Summers**

*Director of Communications*

esummers@deervalley.com | 435-645-6522

**Hanna Albertson**

*Communications Manager*

halbertson@deervalley.com

**Riley Elliott**

*Communications Specialist*

relliott@deervalley.com | 435-645-6531

[deervalley.com](https://www.deervalley.com)

 @deervalleyresort

 @deer\_valley