

TRAIL PROGRESSION

- DOWNHILL ONLY TRAILS**
- ◆ Tsunami
 - ◆ Tidal Wave
 - ◆ Undertow
 - ◆ Upper Twist and Shout
 - ◆ Regulator
 - ◆ Tidal Wave
 - ◆ Naildriver
 - ◆ Super G
 - ◆ Holy Roller
 - ◆ Ripple
 - ◆ Secrets of My Success

START HERE AND WORK YOUR WAY UP
FREERIDE

TECHNICAL

- START HERE AND WORK YOUR WAY DOWN
- ◆ Ant Pants
 - ◆ Sunset
 - ◆ Ninja's Dog Pound
 - ◆ Lila's Dog Pound
 - ◆ Lower Aspen Slalom
 - ◆ Freestyle
 - ◆ Piper's Dog Pound
 - ◆ Izzy's Dog Pound
 - ◆ Peddler's Inn
 - ◆ Old School
 - ◆ Lower Twist and Shout
 - ◆ Devo
 - ◆ Buttercup
 - ◆ Pointy Rocks
 - ◆ Upper Aspen Slalom
 - ◆ Thieves Forest
 - ◆ Fire Swamp
 - ◆ NCS

XC TRAILS

START HERE AND WORK YOUR WAY DOWN

- Lakeside Trails
- ◆ Tour des Homes
- ◆ Deer Crest
- ◆ Mid Mountain Trail
- ◆ Road to Ruby
- ◆ Moose Bones
- ◆ Corvair
- ◆ Tour des Suds
- ◆ Boulder
- ◆ TBB "Team Big Bear"
- ◆ T.G.

Freeride trails are often wider than technical trails, containing enhanced and modified terrain obstacles and features such as jumps, berms, banks, bridges, drops, etc. created from dirt, wood or other materials. Freeride trails may also incorporate technical trail features and designs.

Technical trails are often relatively narrow and contain features and characteristics found naturally occurring on the area property, its slopes, trails, and terrain. Technical trails may contain roots, gravel rocks, logs, water crossings, jumps, drops and other natural characteristics and obstacles found in the natural environment, and may also include some man-made obstacles and bridges. Technical trails may also incorporate freeride trail features and designs.



DEER VALLEY

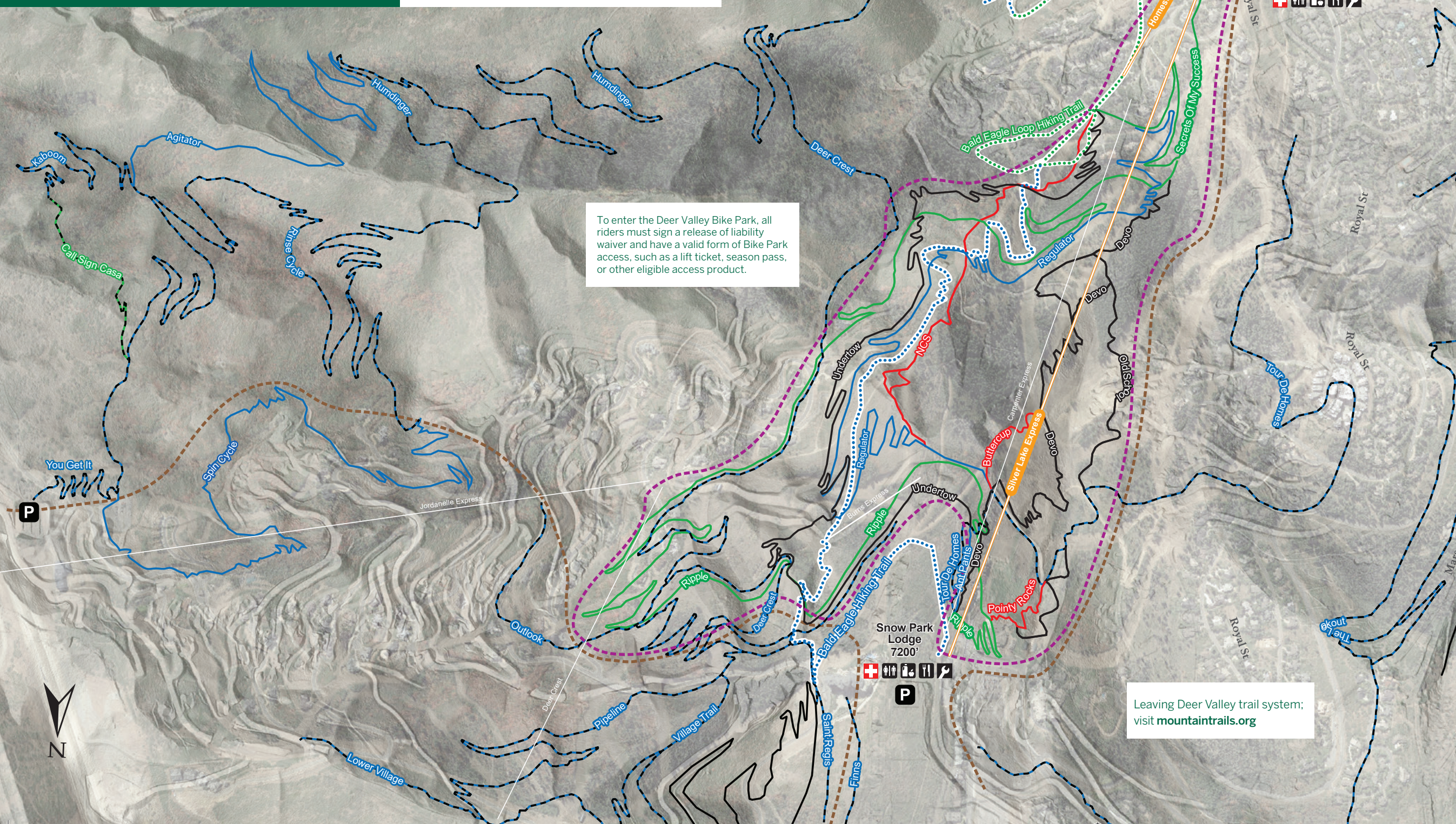
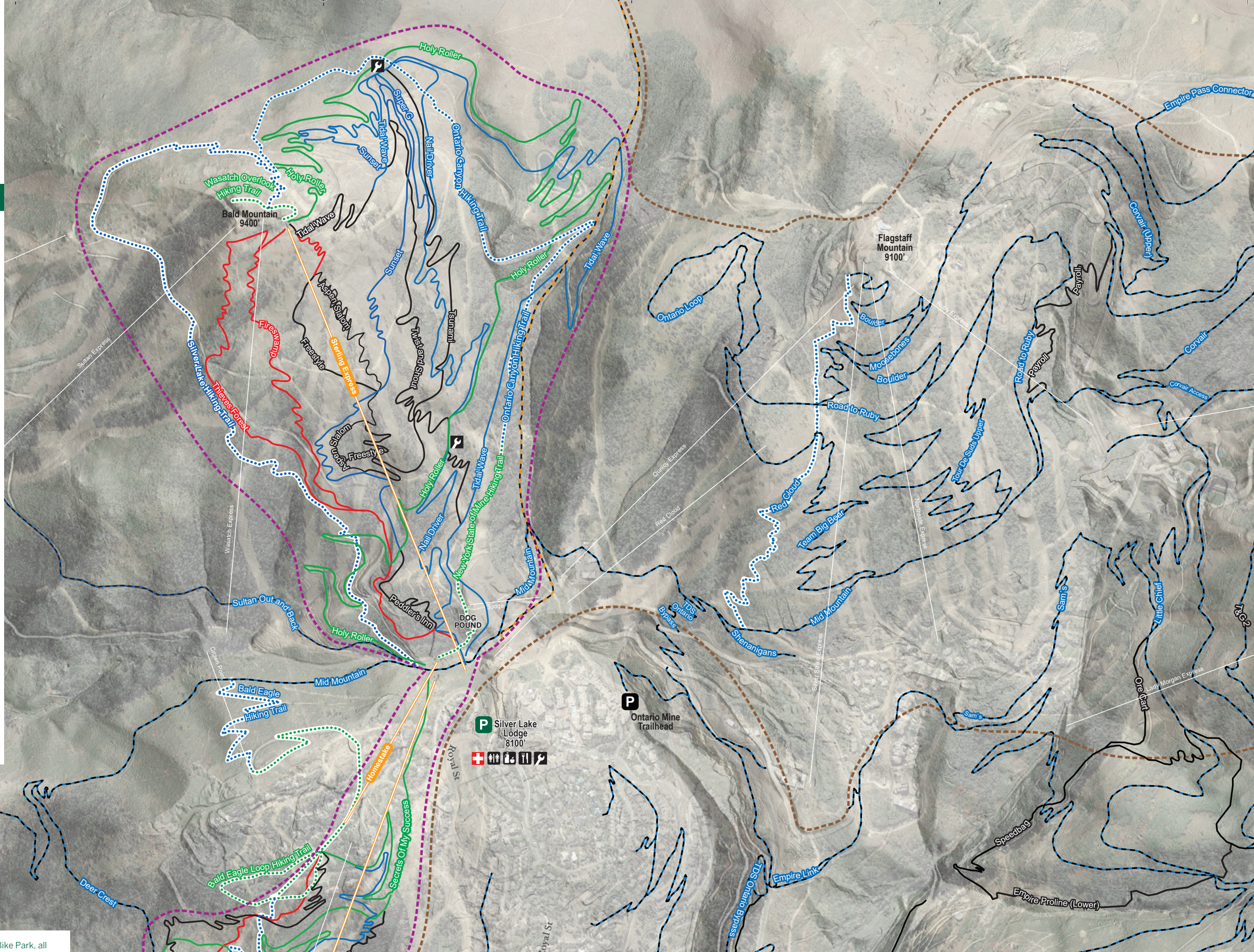
LEGEND

- Easiest
 - Difficult
 - More Difficult
 - Expert Only
- Downhill Biking Only
 - Multi Use Trails
 - Hike Only
 - Resort Boundary
 - Bike Park Boundary
 - Construction Access Route
- P** Parking
 - P** Paid Parking
 - +** First Aid
 - ♿** Restroom
 - 🍽** Food Service
 - 🍷** Snacks & Beverages
 - 🔧** Tool Station

IN CASE OF AN EMERGENCY

For first aid assistance during operating hours, see lift attendant or call 435-645-6804.

After hours dial 911



To enter the Deer Valley Bike Park, all riders must sign a release of liability waiver and have a valid form of Bike Park access, such as a lift ticket, season pass, or other eligible access product.

Leaving Deer Valley trail system; visit mountaintrails.org

MOUNTAIN BIKE CODE OF CONDUCT

Mountain Biking is different than road or soft surface trail riding. It is confined to trails where rocks, dirt, loose gravel, stumps, and trees may be encountered at any time. Changing weather conditions, terrain variations, including steepness, natural, and man-made obstacles and features, and other dangers or conditions may be encountered on the mountain and are inherent risks.

Mountain biking or hiking offer a range of challenges and adventures. Trail users can choose gentle scenic routes, flow trails or challenging single track descents. Regardless of what type of terrain you select, remember, there are elements of risk in mountain biking or hiking. Common sense and personal awareness can help to create a great trail experience for everyone. By mountain biking or hiking at Deer Valley Resort, trail users understand and acknowledge that mountain biking or hiking are hazardous sports with many inherent risks and trail users assume all risks of personal injury as well as damage to or loss of property arising from participation in these sports.

All riders who enter the Deer Valley Bike Park must sign a release of liability waiver, have a valid lift ticket or obtain a Bike Park access pass.

- Stay in control. Yield to riders going at different speeds and announce yourself when approaching them
- Know your limits. Ride within your ability. Start small and work your way up
- Protect yourself. Be self-sufficient and aware of changing weather and terrain conditions. Water, tools, protective gear, gloves, sturdy shoes and sunscreen are recommended. Helmets are required for all bikers
- Inspect and maintain your equipment. Know your components and their operation prior to riding
- Inspect the trails and features. When in doubt, walk your bike
- Be lift smart. Prior to using any lift, you must have the knowledge and ability to load, ride and unload safely. If you need help understanding the Code, please ask an employee
- Obey signs and warnings. Obey all trail signs and markings and only ride/hike on designated trails
- Be visible. Don't stop where you obstruct a trail or are not visible to others
- Look and yield to others. Always yield to vehicles, horses, hikers, uphill and slow riders
- Cooperate. Notify the lift operator for first aid assistance or call 435-615-6208. If involved in or witness to an incident, identify yourself to staff

Summer is the ideal time for trail maintenance, including repairs, grooming, clearing debris, reinforcing edges, and ensuring proper drainage—tasks that are difficult during winter due to snow cover. Additionally, the resort also takes this time for terrain expansion, introducing new areas for exploration to enhance the guest experience. While trail closures and heavy equipment may be present, these improvements are necessary for future success. Please stay alert and abide by all trail closures for your safety and the safety of our staff.

For more information please scan the QR code or visit deervalley.com

